



MEDIA RELEASE

Jewel Changi Airport's Canopy Park Unveiled

***New lifestyle attraction to feature world-class play attractions and gardens
in air-conditioned comfort***

SINGAPORE, 7 June 2017 – Travellers and local residents can soon look forward to a refreshing line-up of unique lifestyle offerings at *Canopy Park*, located at the topmost level of Jewel Changi Airport (Jewel).

At approximately 14,000 square metres (sqm), (equivalent to the size of 11 Olympic-size swimming pools), *Canopy Park* will feature unique offerings such as play attractions, gardens, walking trails, and dining outlets. Designed to be a world-class, lifestyle leisure attraction, *Canopy Park* promises a gamut of experiences for visitors to Jewel and travellers at Changi Airport.

First-of-its-kind play attractions

Three iconic play attractions - ***Sky Nets, Canopy Mazes and Discovery Slides*** will take pride of place at *Canopy Park* and provide an element of interactivity to the overall offerings at *Canopy Park*. Designed by world-renowned consultants from Britain, France, Germany, Singapore and The Netherlands, the play attractions at *Canopy Park* offer a unique proposition not found anywhere else. Visitors will be able to bounce, roam, and slide to their hearts' content at these timeless attractions, specially designed for Jewel's unique indoor garden environment.

Each of these play attractions have embraced timeless elements of play which are specifically designed to blend into *Canopy Park's* lush greenery. Housed within Jewel's distinctive facade, visitors and travellers can experience these play attractions under all weather conditions.

- 1) The ***Sky Nets*** play attraction is customised specially for Jewel. It combines two concepts - a bouncing and walking net in a single play attraction. This play attraction is a world's first created on such a scale in an indoor environment. The highlight of

Sky Nets will be the thrill of walking over a void and looking down 25 metres (m) to Jewel's level 1.

- 2) Jewel's **Canopy Mazes** comprises two different maze concepts that provide a twist to the traditional mazes. The hedge maze has an elevated watch tower that offers visitors with a bird's eye view of the maze. The second maze has mirror design elements, where visitors will encounter challenges at every turn as they attempt to orientate themselves out of the maze. This mirror maze will be the first-of-its-kind to be built in a garden environment.
- 3) The **Discovery Slides** is specially designed to be both a magnificent art sculpture as well as a playground for enjoyment. This play attraction has a 4-slides-in-1 sculptural playscape harmonised in a garden environment where adults and children alike can experience various type of slides like none other. The sculpture is also specially created so that observers can join in the element of fun and interactivity, while also having the opportunity to stand atop an 8m high platform that overlooks the *Forest Valley* and enjoy a spectacular view of the lush greenery.

In addition to the three main play attractions, open areas will also allow young children to wander amidst the greenery in the park. One of such specially created areas, also known as **Foggy Bowls**, will have four gentle concave bowls with depths ranging from 30 to 65cm with an element of mist to create the experience of playing amongst clouds. In Jewel, the wonders of nature are brought indoors for everyone's enjoyment.

Rounding up the list of attractions at *Canopy Park* is the 50m long **Canopy Bridge**, where visitors will have an excellent vantage point to enjoy the breathtaking 40m high *Rain Vortex*. Adding to the thrill factor, the *Canopy Bridge* which suspends 23m above ground, will have glass panel flooring in the centre portion of the bridge for visitors to look right through to level 1 of Jewel.

Please refer to the Annex for more information about the play attractions.

Gardens Galore

In line with Singapore's reputation as a City in a Garden, and Changi Airport's reputation for its gardens and greenery, Jewel will house one of the largest indoor collections of plants in Singapore – with about 22,000sqm of space dedicated to landscaping throughout the

complex¹. About half of the total landscaping and greenery in Jewel will be housed at *Canopy Park*, which boasts over 1,400 trees and palms.

Part of the lush offerings will also comprise two specially created gardens – the *Topiary Walk* and *Petal Garden*. Nestled amongst winding walkways, the *Topiary Walk* will surprise visitors with its animal-shaped topiaries at the turn of every corner, while the *Petal Garden* will have seasonal floral displays, adding to the overall lush environment of *Canopy Park*.

“Singapore Meets the World, and the World Meets Singapore”

“When we conceptualised *Canopy Park*, we envisaged an area that is not only relaxing because of the lush greenery around, but also one that is filled with timeless activities and interactions for visitors of all ages. It is our vision to pitch Jewel at the highest level and to position it as a world-class attraction for Changi Airport and Singapore.

“*Canopy Park* is designed with this objective in mind, and we want to create a place that will attract visitors from all over the world. Changi Airport also holds a special place in the hearts of Singaporeans, and we believe that the unique offerings at Jewel will offer them added reason to revel in the Changi Airport experience and join us in hosting the world.

“To capture tourism mindshare amongst international travellers, and elevate the Changi Experience, Jewel’s unique offerings including *Canopy Park*, *Forest Valley* and the *Rain Vortex*, will be a place where “Singapore meets the World, and the World meets Singapore”, right at the doorstep of Singapore Changi Airport, one of the most acclaimed icons in the world,” said Ms Hung Jean, Chief Executive Officer of Jewel Changi Airport Devt.

Jewel is scheduled to be opened in early 2019.

#####

¹ Comparable to the combined space of the two indoor Conservatories at Gardens by the Bay.

About Jewel Changi Airport Trustee (www.jewelchangiairport.com)

Jewel Changi Airport (Jewel) is a joint venture between Changi Airport Group (CAG), manager of Singapore Changi Airport, and CapitaLand, through its wholly owned shopping mall business, CapitaLand Mall Asia. The Jewel complex is currently being constructed and is expected to open in early 2019. Located in front of Changi Airport's Terminal 1, Jewel will be a world-class lifestyle destination in Singapore, enhancing Changi's appeal as a premier air hub.

Designed by world renowned architect Moshe Safdie, Jewel will feature a distinctive dome-shaped facade made of glass and steel, making it an iconic landmark in the airport's landscape. At approximately 134,000 sqm in size, it will offer a range of facilities including airport services, indoor gardens and leisure attractions, retail and dining offerings as well as a hotel, all under one roof.

Jewel Changi Airport is owned by Jewel Changi Airport Trust (Trust). Jewel Changi Airport Trustee Pte. Ltd. is the trustee-manager of the Trust, while Jewel Changi Airport Devt Pte. Ltd. is the development and property manager of Jewel. CAG is the majority 51% unitholder and shareholder of the Trust and the two joint venture companies, while CapitaLand owns the remaining 49%.

Facts about the play attractions at *Canopy Park* *To bring out the child in everyone*

Sky Nets



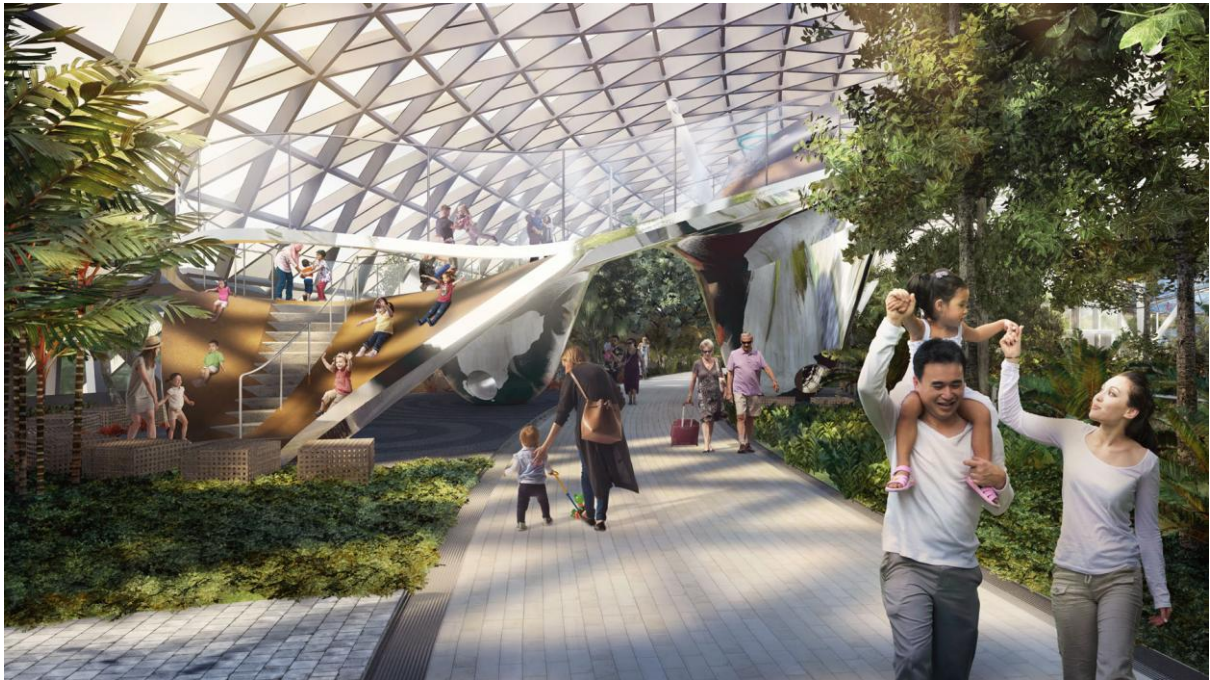
- Designed by: Officium (walking net) and Chien Noir (bouncing net)
- Key feature: First large-scale Nets attraction in Singapore providing visitors with differentiated experiences.
- The bouncing net, designed by Chien Noir, is 250m in length and visitors can begin their journey by bouncing on this net from start to end. At its highest point, visitors will be suspended 8m (3 storeys) above ground, adding much excitement to their experience. Unlike traditional trampolines where jumps are done in specific frames, the bouncing net will not be bound by the same requirements, thus giving visitors more flexibility to bounce to their hearts' content.
- The walking net, designed by Officium, is 50m in length and while it doesn't provide a bouncing experience, the thrill element lies in its design where visitors can look through the voids, suspended 25m above ground (from level 1).

Canopy Mazes



- Designed by: Adrian Fisher, the creator of over 600 mazes, the largest number of mazes globally
- Key feature: Largest hedge maze in Singapore where the hedges are 1.8m in height. Comes with a lookout tower for visitors to have a bird's eye view of the beautiful hedge maze.
- First mirror maze designed for an outdoor park environment. An exciting play attraction where illusions create challenge and confusion and visitors are rewarded with an infinity chamber as a surprise ending.
- Both mazes cover an area of over 500sqm.

Discovery Slides



- Designed by: Carve (The Netherlands) and Built by: Playpoint (Singapore)
- Key feature: Specially designed to be both a magnificent art sculpture as well as a play slide for everyone's enjoyment.
- First large-scale sculptural art piece in Singapore made up of four integrated slides – two tube slides and two sliding surfaces - of varying heights to provide children and the young-at-heart with hours of sliding fun.
- For the less adventurous, the Slides also function as a viewing gallery to the amazing Forest Valley and Rain Vortex with its 8m high observatory deck.

Foggy Bowls



- Designed by The Exploratorium, San Francisco
- Key feature: Four gentle concave bowls with depths of between 30 to 65cm, for young children to jump in while mist is emitted to create an illusion of playing amongst clouds.

Canopy Bridge



- Key feature: Suspended 23m above ground and at 50m long, the Canopy Bridge with its glass panel flooring at the centre section, and mist effects, is ideal for a fantasy stroll amongst the clouds over the Forest Valley.
- Best vantage point for the *Rain Vortex* display.